

Project information

Grant Agreement No. 101057385
Programme Horizon Europe
EU Contribution € 7 856 503,75
Starting date 1 September 2022
Duration 60 months
Coordinator Prof. Thomas Bourgeron (Institut Pasteur)

Follow us!

@R2d2Mh
 R2D2-MH Project
 r2d2-mh.eu

Get in touch: communication@r2d2-mh.eu



Resilience in mental health and neurodevelopmental diversities

- Neurodevelopmental diversities (NDDs) as autism, attention deficit / hyperactivity disorder (ADHD), and intellectual disabilities (ID) have a high prevalence of up to 15% of the population.
- Researchers have long focused on risk factors, omitting the role of resilience in the way individuals positively adapt to adversity even in the presence of risk factors, like genetic mutations or preterm birth

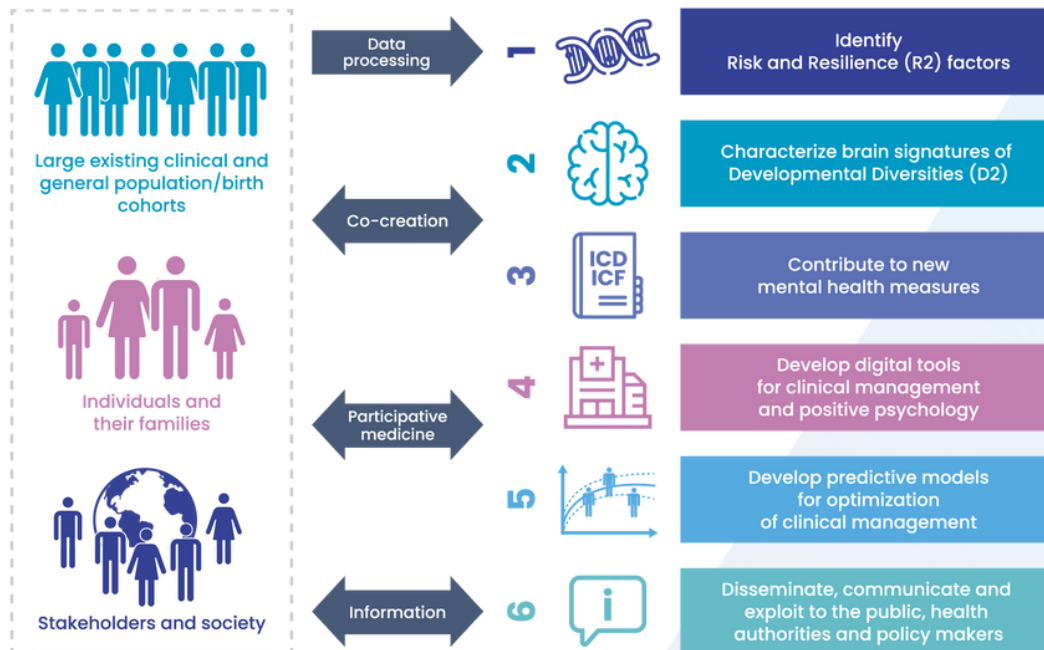


R2D2-MH proposes a double paradigm shift, not only by integrating resilience factors to its research approach and tools, but also by redefining wellbeing and functioning in a neurodevelopmental diversity approach.



R2D2-MH approach

R2D2-MH is organized in 6 work-packages that will be implemented in regular communication with the society and stakeholders:



Consortium

